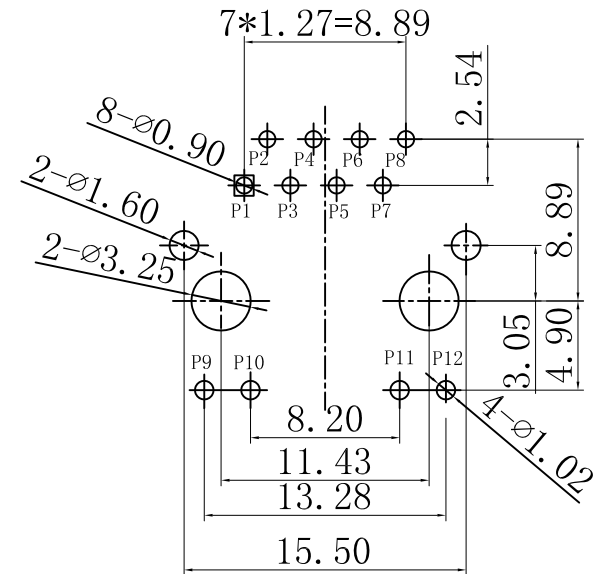
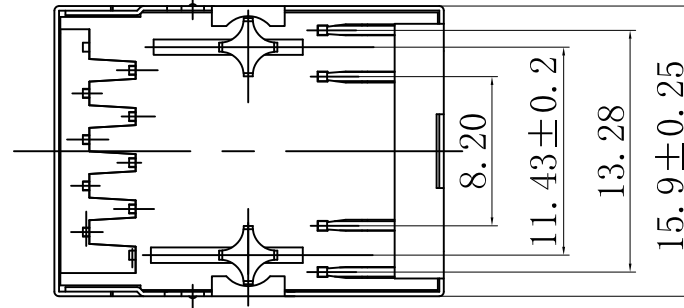
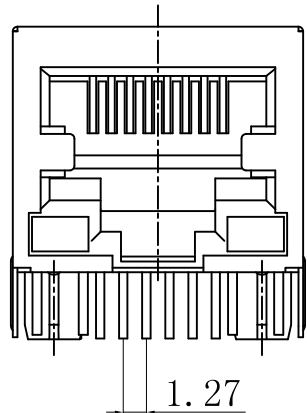
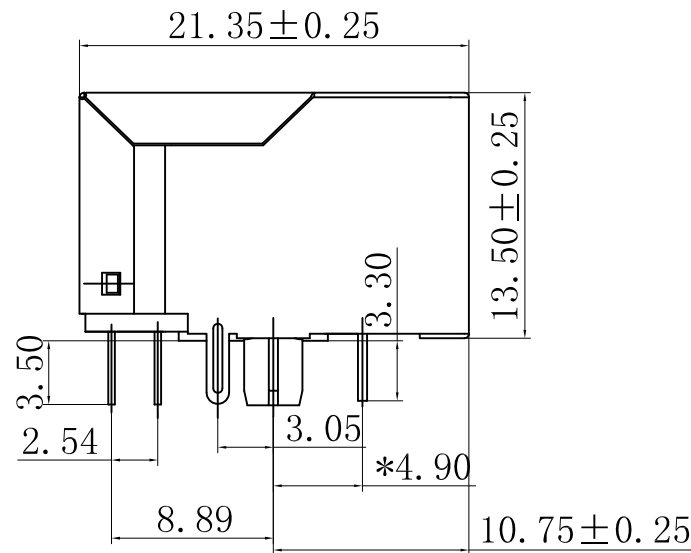


REV.	ECN NO.	DATE
00	新版发行	2011-04-19



Recommended PWB Layout
(Component Side View)



RoHS Compliant

Coorle 库乐科技

TOLERANCES
 0~15 ±0.15
 15~30 ±0.20
 30~50 ±0.25
 50~ ±0.30
 ANGLES: ±1°

MATERIAL:

Designed: Tin

NAME: 5921 8P8CS LED 100M

FINISH:

Checked: Michael

DWG NO: CL1027A

REV.

SHEET 1 OF 2

Approved: Michael

PART NO: 59218P8CS100M

00



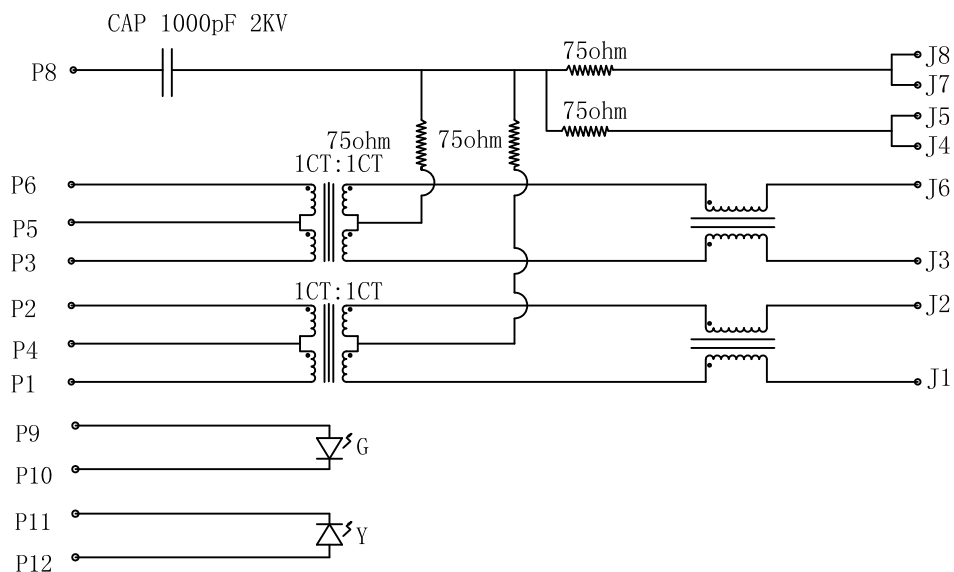
A4
SIZE

SCALE
1:1

UNIT
mm

CUSTOMER:

REV.	ECN NO.	DATE
00	新版发行	2011-04-19



Electronical Specifications:

- 1.0 Turn Ratio @100KHz: (P1~P2) (J1~J2)=1:1±5%;
(P3~P6) (J3~J6)=1:1±5%;
- 2.0 Primary Inductance: 350uH MIN @100KHz, 0.1V 8mA DC BIAS;
- 3.0 DC Resistance: (J1~J2): (J3~J6) 1.2 OHMS MAX;
- 4.0 Insertion Loss: 1-100MHz -1.2 dB MAX
- 5.0 Return Loss: 1-30MHz -16dB MIN
30-60MHz -12 dB MIN
60-80MHz -10 dB MIN
- 6.0 CROSS TALK: 1-100MHz -30dB MIN
- 7.0 COMMON TO COMMON MODE ATTENUATION: 1-100MHz -30dB MIN
- 8.0 Isolation: PHY Side to Line Side: 1500VAC or 2250VDC

NOTES:

1. CONNECTOR MATERIAL:
HOUSING:PBT;
SHIELD:BRASS;
SHIELD PLATING:NICKEL;
CONTACT:COOPER ALLOY;
CONTACT PLATING:SELECTIVE GOLD, 6 MICRO-INCHS MIN IN CONTACT AREA.
2. PIN NOT ELECTRICALLY CONNECTED MAYBE OMITTED SEE ELECTRICAL DRAWING FOR OMITTED PINS.
3. RJ45 CAVITIES CONFORM TO FCC RULES AND REGULATION PART 68.
4. THE PART IS RECOMMENDED FOR WAVE SOLDERING PROCESS PEAK SOLDERING TEMPERATURE IS 260° C MAX, 10 SECS MAX
5. OPERATING TEMPERATURE T=0° C TO +70° C.
6. STORAGE TEMPERATURE T=-40° C TO +85° C.
7. ALL CRITICAL DIMENSIONS WITH "*"

LED SPECIFICATION

STANDARD LED	WAVELENGTH	Forward V(max)	TYP
GREEN	565nm	2.4V	2.2V
YELLOW	590nm	2.5V	2.1V

*WITH A FORWARD CURRENT OF 20mA

RoHS Compliant

Coorle 库乐科技

TOLERANCES

0~15 ±0.15
15~30 ±0.20
30~50 ±0.25
50~ ±0.30
ANGLES: ±1°

MATERIAL:

Designed: Tin

NAME: 5921 8P8CS LED 100M

FINISH:

Checked: Michael

DWG NO: CL1027A

REV.

SHEET 2 OF 2

Approved: Michael

PART NO: 59218P8CS100M

00



A4
SIZE

SCALE
1:1

UNIT
mm

CUSTOMER: